



The assistance of EuroNCAP and Japan NCAP is gratefully acknowledged.

More Information:



(08) 8202 4689



(08) 9365 4720



(08) 8204 8818



1300 655 443



1800 042 865



(07) 3666 9148



131 171



(03) 9790 2190



(08) 9351 1680



(08) 8981 3837



(03) 6232 6344



(07) 3253 4851



(03) 6233 2572



New Zealand

0800 500 333



www.howsafeisyourcar.com.au



www.fiafoundation.com



0800 699 000

WHAT IS ANCAP?

The Australian New Car Assessment Program (ANCAP) gives consumers consistent information on the level of occupant protection provided by vehicles in serious front and side crashes.

The program is supported by Australian and New Zealand automobile clubs, the State government road and transport authorities of NSW, Victoria, South Australia, Queensland, Tasmania and Western Australia and the New Zealand Government.

ABOUT THE TESTS

Each vehicle model tested in ANCAP is subjected to an offset crash test into a barrier, a side impact test and a pedestrian impact test. A pole test is optional. The vehicles purchased for the test program were typical of those vehicles available to new car purchasers.

The offset frontal crash test simulates colliding with another vehicle. In this test, 40% of the car, on the driver's side, initially makes contact with a crushable aluminium barrier at 64km/h.

The side impact test consists of running a 950kg trolley into the driver's side of the test vehicle at 50km/h. The trolley has a crushable aluminium face to simulate the front of another vehicle.

A pole test is an optional extra test, available at the manufacturer's cost, if the vehicle performs very well in the side impact test and is fitted with head protecting side airbags. The vehicle impacts a steel pole lined up with the driver's head, at 29km/h sideways.

The pedestrian impact test estimates injuries to pedestrians struck by a vehicle travelling at 40km/h.

PEDESTRIAN IMPACT TESTS

Pedestrian Impact tests are also carried out, which estimate head and leg injuries to pedestrians struck by the test vehicle travelling at 40 km/h. The results from this test are listed in the ratings below. Pedestrian impacts represent 18 percent of the fatal road crashes in Australia and New Zealand.

THE FINDINGS

The findings in this report are based on a series of crash tests conducted in Australia, Japan and in Europe. The tests conducted in Japan were performed to the same procedures as the Australian tests. Vehicle manufacturers were given the opportunity to examine their vehicles before and after the tests and to view the crash tests and data.

The test results indicate the relative protection provided to front seat occupants when seat belts are used.

ancap CRASH TEST UPDATE JULY 2004



SMALL | LIGHT | MEDIUM | COMPACT 4WD
LUXURY | MPV | SPORTS

CAR CRASH TESTS

ANCAP CRASH TESTS

Vehicle Make & Model	Occupant Rating				
	1*	2*	3*	4*	5*
LIGHT CARS					
Toyota Echo 2003 on, Driver Airbag					
SMALL CARS					
Mazda3 2004 on, Front, Side & Head Airbags					
Nissan Pulsar 2004 on, Dual Front Airbags					
Hyundai Accent 2003 on, Dual Front Airbags	C				
Kia Rio 2004 on, Driver Airbag					
COMPACT 4WD					
Subaru Outback 2004 on, Front, Side, Head Airbags	B P				
Subaru Outback 2004 on, Dual Front Airbags	B				
Mitsubishi Outlander 2003 on, Dual Front Airbags					
MEDIUM CARS					
Subaru Liberty 2004 on, Front, Side, Head Airbags	B P				
Subaru Liberty 2004 on, Dual Front Airbags	B				
SPORTS CARS					
Holden Monaro 2004 on, Front, Side, Head Airbags	B				

EURONCAP CRASH TESTS

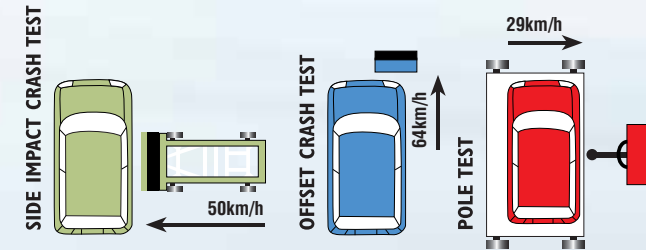
Vehicle Make & Model	Occupant Rating				
	1*	2*	3*	4*	5*
LIGHT CARS					
Citroen C2 (LHD) 2003 on, Front & Side Airbags	B				
SMALL CARS					
Audi A3 2004 on, Front, Side & Head Airbags	P				
Ford Fiesta 2004 on, Dual Front Airbags					
LUXURY CARS					
Mercedes E-Class (LHD) 2004 on, Front, Side & Head Airbags	B P				
MEDIUM CAR/MPV					
Volvo S40 (LHD) 2004 on, Front, Side & Head Airbags	B P				
Toyota Prius 2004 on, Front, Side & Head Airbags	B P				
Holden Vectra (LHD) 2004 on, Front, Side & Head Airbags	P				
SPORTS CARS					
Saab 9-3 (LHD Convertible) 2004 on, Front, Side & Head Airbags	B P				
BMW Z4 (LHD) 2004 on, Front & Side Airbags	B				

EURONCAP

European NCAP (EuroNCAP) testing procedures are substantially the same as ANCAP testing procedures. However, the EuroNCAP results are to be used as a guide only, as the structure and equipment of the European specification model may differ materially from that of the Australian or New Zealand vehicle of the same name. Also, if different safety equipment is fitted, the Australian or New Zealand vehicle of the same name is likely to provide different levels of protection to those noted.

TEST RESULTS

To simplify the crash test results and the pedestrian impact results, ANCAP has assigned an occupant rating and a pedestrian rating in stars to each vehicle model. The occupant rating considers the injury measures to the head, neck, chest, abdomen, pelvis, upper and lower legs and the deformation of the vehicle's structure. The star rating assigned on the basis of the crash test results combines offset and side impact results, and points where advanced seatbelt reminders are fitted, plus points when the optional pole test was conducted. The pedestrian rating considers the injury measures to the head, upper legs, knees and lower legs when struck by a vehicle travelling at 40km/h. Detailed test results are available by calling one of the numbers on the back of this brochure, or by visiting one of the websites.



MAKING COMPARISONS

ANCAP results are intended to be used to compare the crash protection provided by vehicles in severe crashes.

Occupants of heavier vehicles in real-world two-vehicle crashes typically fare better than people in lighter vehicles. This is why crash test results shouldn't be compared among vehicles with large weight differences. In many single-vehicle crashes, weight offers no safety advantage.

ANCAP PEDESTRIAN IMPACT TESTS

Vehicle Make & Model	Pedestrian Rating			
	1*	2*	3*	4*
Subaru Liberty				
Toyota Echo				
Mazda3				
Mitsubishi Outlander				
Hyundai Accent				

EURONCAP PEDESTRIAN IMPACT TESTS

Vehicle Make & Model	Pedestrian Rating			
	1*	2*	3*	4*
Volvo S40 (LHD)				
Ford Fiesta				
Toyota Prius				
BMW Z4 (LHD)				
Citroen C2 (LHD)				
Audi A3				
Saab 9-3 (LHD Convertible)				
Holden Vectra (LHD)				
Mercedes E-Class (LHD)				

KEY TO TEST RESULTS

P Indicates that a pole test was carried out	5* Key to ratings: The more stars the better
B Vehicle is equipped with an advanced seatbelt warning system	C High risk of life threatening injury to driver's chest