

THE SHIPYEAH! SALE

\$1 DEPOSIT* + FREE ROOM UPGRADE*
ON SELECT CRUISES

NOW CRUISING FROM SYDNEY
SALE ENDS 14 AUGUST 2018



See back page for details

SPOILT FOR CHOICE

When to cruise? Here's a handy guide to some of our cruises on sale now.

| DATES | SHIP | CRUISE | NIGHTS | ITINERARY | DATES | SHIP | CRUISE | NIGHTS | ITINERARY | DATES | SHIP | CRUISE | NIGHTS | ITINERARY |
|---------------------------------|-------|--------|-------------------------------|-----------|-------------|-------|--------|---------------------------------|-----------|------------------------------------|-------|--------|---|-----------|
| CRUISES DEPARTING SYDNEY | | | | | 2019 | | | | | CRUISES DEPARTING CAIRNS | | | | |
| 2018 | | | | | 2019 | | | | | 2020 | | | | |
| Aug 31 | X841 | 8 | A Taste of New Caledonia | | Jan 8 | E902 | 7 | Southern Barrier Reef Discovery | | Nov 2 | A947 | 6 | Melbourne Cup | |
| Sep 8 | X842 | 3 | Sea Break - Food & Wine | | 15 | E903 | 4 | Moreton Island | | 2 | X955 | 6 | Melbourne Cup | |
| 10 | E848 | 4 | Sea Break - Moreton Island | | 17 | X903 | 8 | A Taste of New Caledonia | | 12 | A949 | 11 | New Guinea Island Encounter | |
| 11 | X843 | 10 | Discover Vanuatu | | 19 | E904 | 5 | Australian Open Tennis | | 27 | X951 | 10 | Barrier Reef Discovery | |
| 14 | E849 | 4 | Sea Break - Sunshine Coast | | 24 | E905 | 3 | Australia Day | | 17 | X965 | 10 | Christmas | |
| 18 | E850 | 10 | Discover Vanuatu | | 27 | E906 | 3 | Comedy ending in Adelaide | | 18 | A955 | 10 | Christmas | |
| 21 | X844 | 3 | Sea Break - Food & Wine | | 28 | X905 | 4 | Moreton Island | | 28 | A001 | 10 | New Year's Eve | |
| 24 | X845 | 10 | Discover Vanuatu | | Feb 1 | X906 | 3 | Comedy | | 30 | X001 | 9 | New Year's Eve | |
| 28 | E851 | 4 | Sea Break - Moreton Island | | 4 | X907 | 4 | Moreton Island | | CRUISES DEPARTING ADELAIDE | | | | |
| Oct 2 | E852 | 8 | A Taste of New Caledonia | | 8 | X908 | 3 | Comedy | | 2019 | | | | |
| 4 | X846 | 4 | Sea Break - Moreton Island | | 11 | X909 | 10 | Discover Vanuatu | | Aug 24 | E845 | 3 | Comedy | |
| 10 | E853 | 9 | Explore the Loyalty Islands | | 21 | X910 | 4 | Moreton Island | | Sep 6 | E847 | 4 | Classic - Townsville ending in Sydney | |
| 19 | E854 | 3 | Sea Break - Comedy | | 25 | X911 | 7 | Southern Barrier Reef Discovery | | CRUISES DEPARTING FREMANTLE | | | | |
| 22 | E855 | 4 | Sea Break - Moreton Island | | Mar 4 | X912 | 4 | Moreton Island | | 2019 | | | | |
| 26 | E856 | 8 | A Taste of New Caledonia | | 8 | X913 | 3 | Comedy | | Mar 16 | E918N | 18 | Southeast Asia Explorer ending in Singapore | |
| 9 | E858 | 4 | Sea Break - Moreton Island | | 21 | X915 | 4 | Moreton Island | | CRUISES DEPARTING SINGAPORE | | | | |
| 13 | E859 | 10 | Discover Vanuatu | | 25 | X916 | 4 | Moreton Island | | 2020 | | | | |
| 23 | E860 | 3 | Sea Break - Comedy | | 29 | X917 | 3 | Comedy | | Feb 28 | X008 | 14 | Indonesian Explorer ending in Singapore | |
| 25 | J849N | 2 | Comedy ending in Melbourne | | Apr 1 | X918 | 4 | Moreton Island | | 2020 NOW ON SALE | | | | |
| 26 | E861 | 9 | Explore the Loyalty Islands | | 5 | X919 | 8 | A Taste of New Caledonia | | | | | | |
| Dec 5 | E862 | 4 | Sea Break - Moreton Island | | 13 | X920 | 10 | Discover Vanuatu | | | | | | |
| 7 | X855 | 3 | Sea Break - Comedy | | 23 | X921 | 4 | Moreton Island | | | | | | |
| 9 | E863 | 5 | A Taste of Tasmania | | 27 | X922 | 3 | Comedy | | | | | | |
| 10 | X856 | 4 | Sea Break - Moreton Island | | 30 | X923 | 10 | Discover Vanuatu | | | | | | |
| 14 | E864 | 3 | Sea Break - Comedy | | Jun 18 | X933 | 6 | Dark Mofo | | | | | | |
| 14 | X857 | 4 | Sea Break - Moreton Island | | Jul 10 | X936 | 9 | Explore the Loyalty Islands | | | | | | |
| 17 | E865 | 10 | Christmas | | 22 | X938 | 10 | Barrier Reef Discovery | | | | | | |
| 18 | X858 | 10 | Christmas | | Aug 1 | X939 | 7 | Southern Barrier Reef Discovery | | | | | | |
| 27 | E866 | 3 | Sea Break - Classic - Festive | | 12 | X941 | 8 | A Taste of New Caledonia | | | | | | |
| 30 | E901 | 9 | New Year's Eve | | 20 | X942 | 10 | Discover Vanuatu | | | | | | |
| | | | | | Sep 6 | X945 | 8 | A Taste of New Caledonia | | | | | | |
| | | | | | Oct 7 | X951N | 10 | Discover Vanuatu | | | | | | |
| | | | | | 15 | A944 | 10 | Discover Vanuatu | | | | | | |
| | | | | | 17 | X952 | 16 | Bounty Adventure | | | | | | |

SHIP KEY: ● PACIFIC ARIA ● PACIFIC DAWN ● PACIFIC EDEN ● PACIFIC JEWEL ● PACIFIC EXPLORER



For booking information
call us on 1300 053 052

BOOK NOW AT

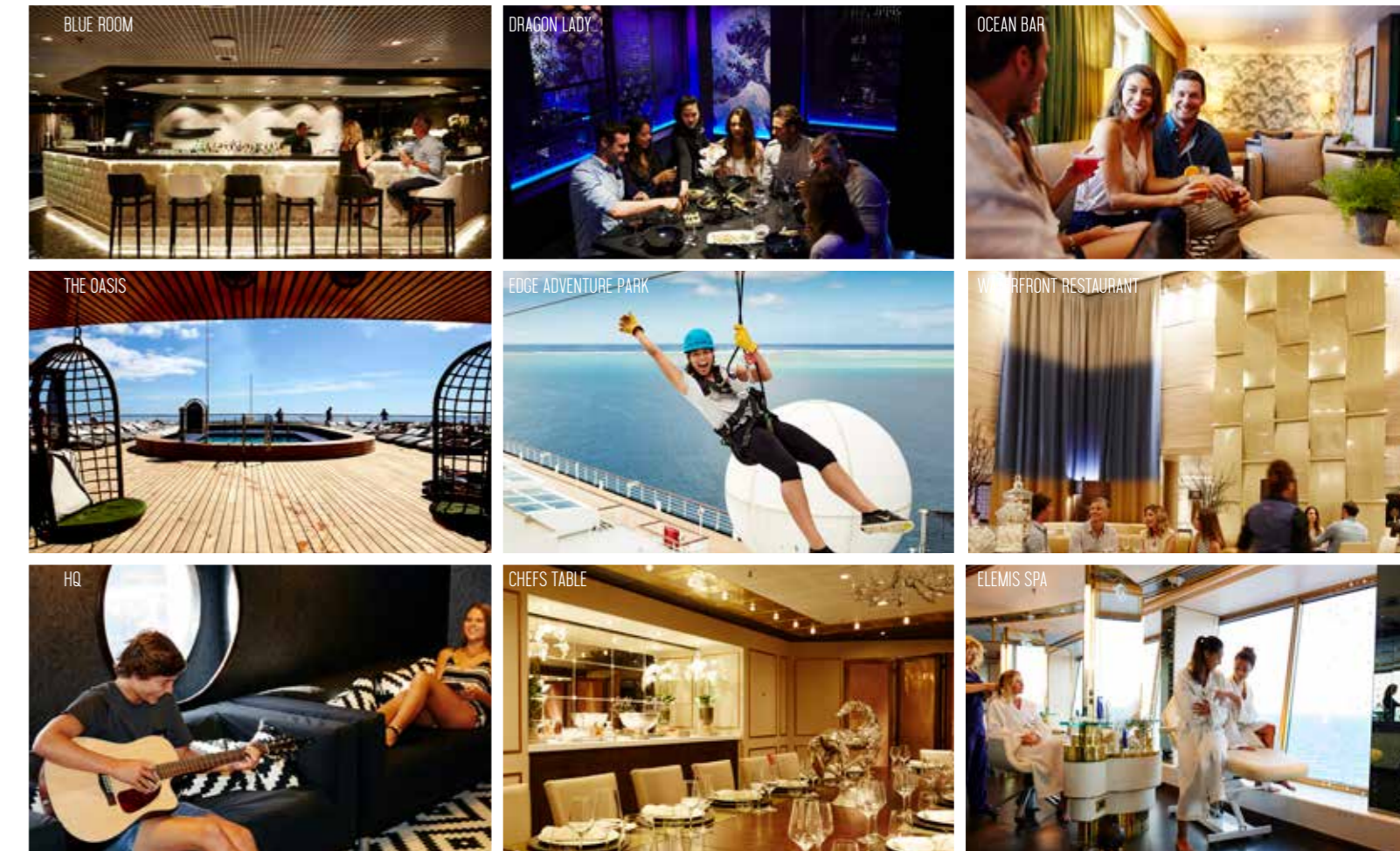


Search NRMA Travel or visit 9A York St, Sydney.

*Fares are cruise only, per person in AUD in a complete quad or twin room based on lead interior category at publication date (6 Jun 2018), inclusive of all discounts, charges and taxes (which are subject to change). Campaign commences 6 Jun 2018 and ends 14 Aug 2018 and is valid on select sailings. Advertised fares are available until allocation is exhausted and may fluctuate during the campaign period. Campaign offers only available on P&O's Value and Value Plus fare types only for sailings between 6 Jun 2018 and 24 Apr 2020. Valid for new bookings and not combinable with any other offer. Supplements apply for other room categories. Some oceanview rooms have obstructed views. Fare based on specified departure dates. Different fares apply to other dates listed. Deposits are non-refundable and deposit conditions differ from the standard P&O Booking and Travel Conditions. #Pay AUS1 per person deposit upfront (for every passenger) followed by final payment or the remainder of the standard adult deposit amount to be paid as follows - for cruises departing between 10 Dec 2018 and 02 Feb 2019 the additional deposit is due 95 days prior to departure; for cruises departing between 03 Feb 2019 and 30 Apr 2019 the additional deposit is due 150 days prior to departure; for cruises departing between 01 May 2019 and 24 Apr 2020 the additional deposit is due 180 days prior to departure. Final payment for your cruise is due 75 days prior to departure. For cruises departing between 21 Aug and 09 Dec 2018 the AU\$1 deposit is applicable if the date of booking is greater than 75 days before departure; final payment is then due 75 days before departure. Full payment is required for sailings booked within 75 days of departure. The additional deposit charged will be the remainder of the standard adult deposit for all passengers, including children. For bookings departing prior to 21 Aug 2018 \$1 deposit does not apply, and full payment is required at time of booking. Other campaign promotions - onboard spending money and room upgrades - apply. Standard cancellation and refunds conditions apply as per Booking and Travel Conditions. #Free Room Upgrade offer is available on cruises based on the price difference between the lead interior to lead oceanview for quad and twin rooms for all ships except Pacific Explorer, Pacific Explorer or free upgrade from Oceanview to Balcony room. Upgrades are subject to availability of rooms in the higher grade. A 11% surcharge for Visa and Mastercard and a 2.3% surcharge for Amex applies to direct bookings made through our call centre and website. Paypal payments will incur a 1% surcharge. Travel agents may charge additional fees - check with your travel agent. For P&O SeaBreaks, if your cruise is unable to visit the destination on its itinerary because of an unforeseen circumstance such as weather, civil unrest or a mechanical issue, we will endeavour to visit an alternative destination deemed safe by the Captain. To be read in conjunction with the P&O Cruises Australia Booking and Passage Conditions available at https://www.pocruises.com.au/plan/how-to-book/book-travel-conditions which passengers will be bound by. Whilst all information is correct at time of publication, offers are subject to change or withdrawal. Carnival plc trading as P&O Cruises Australia. ABN 23 107 998 443.

Welcoming PACIFIC ARIA TO SYDNEY

Pacific Aria offers great dining experiences, world-class entertainment and spaces designed for you and your family to unwind. This is cruising made for modern Australia.



PACIFIC ARIA: 1,260 GUESTS, LOWER BERTHS | 9 GUEST DECKS | MAX. SPEED: 20 KNOTS | 219 METRES IN LENGTH | 55,820 TONNAGE

DON'T MISS OUT ON ENJOYING ONE OF PACIFIC EDEN'S LAST VOYAGES BEFORE SHE LEAVES SYDNEY IN JAN 2019.

BOOK NOW!

THE SHIPYEAH! SALE



\$1 DEPOSIT*

Don't think twice - book your cruise today, and only pay a \$1 deposit, for select sailings departing from 26 October 2018 onwards.

FREE ROOM UPGRADE*

Be the first to spot land from the comfort of your room with an upgrade from an Inside to an Oceanview Room (all ships except Pacific Explorer), or from an Oceanview to Balcony Room onboard Pacific Explorer.

*T&C's apply.

P&O SEA BREAKS

Cruise for a good time not a long time! Enjoy a quick Aussie break on a one-stop cruise or a fun themed event.

COMEDY 3 NIGHTS

DEPARTING SYDNEY

2018: 7, 14 Dec
 2019: 1, 8 Feb, 8, 29 Mar, 27 Apr, 10 May, 8, 15 Jun, 19 Jul, 30 Aug, 27 Sep, 4 Oct, 8, 22 Nov, 7, 14, 27 Dec
 2020: 31 Jan, 27 Mar, 11, 24 Apr

| Fares pp* from | Interior Quad | Oceanview Quad Upgraded to Balcony | Interior Twin | Oceanview Twin Upgraded to Balcony |
|----------------|---------------|---------------------------------------|---------------|---------------------------------------|
| VALUE | \$349 | \$449 | \$449 | \$549 |
| VALUE PLUS | \$379 | \$479 | \$499 | \$599 |

Fares per person based on **bold** departure date on Pacific Explorer. Please request Balcony room at time of booking to receive upgrade. For sailings on Pacific Explorer room upgrade applies from Oceanview to Balcony. For sailings on Pacific Eden/Aria room upgrade applies from Interior to Oceanview rooms. Different fares apply to other departure dates listed.



THE BEST WAY TO SEE THE *Best* OF THE SOUTH PACIFIC

P&O has been cruising to the South Pacific for over 85 years, way before anyone else ever dreamt of it. In that time, we've found the best things to do in each location and trusted local guides who will show you around.

Not only have we discovered and pioneered a number of island paradises, we've built strong relationships with our Pacific Island neighbours.

Book a P&O Islands cruise today and discover some of the world's best-kept secrets.

P&O ISLANDS

A TASTE OF NEW CALEDONIA 8 NIGHTS

DEPARTING SYDNEY

HIGHLIGHTS: Loyalty Islands and New Caledonia

2019: 9, 17 Jan, 5 Apr, 20 May, 12 Aug, 6 Sep
 2020: 7, 8 Jan, 3 Apr

| Fares pp* from | Interior Quad | Oceanview Quad Upgraded to Balcony | Interior Twin | Oceanview Twin Upgraded to Balcony |
|----------------|---------------|---------------------------------------|---------------|---------------------------------------|
| VALUE | \$749 | \$849 | \$899 | \$1,199 |
| VALUE PLUS | \$1,009 | \$1,109 | \$1,419 | \$1,719 |

Fares per person based on **bold** departure date on Pacific Explorer. Please request Balcony room at time of booking to receive upgrade. Different fares apply to other departure dates listed.

NEW GUINEA ISLAND ENCOUNTER 11 NIGHTS

DEPARTING SYDNEY

HIGHLIGHTS: Alotau, Kitava and Conflict Islands

2019: 12 Nov

| Fares pp* from | Interior Quad | Oceanview Quad Upgraded to Balcony | Interior Twin | Oceanview Twin Upgraded to Balcony |
|----------------|---------------|---------------------------------------|---------------|---------------------------------------|
| VALUE | \$1,099 | | \$1,699 | |
| VALUE PLUS | \$1,449 | | \$2,399 | |

Fares per person based on **bold** departure date on Pacific Aria. Please request Oceanview room at time of booking to receive upgrade. Different fares apply to other departure dates listed.

DISCOVER VANUATU 10 NIGHTS

DEPARTING SYDNEY

HIGHLIGHTS: Loyalty Islands, New Caledonia and Vanuatu

2019: 11 Feb, 11 Mar, 13, 30 Apr, 20 Aug, 17 Sep, 7, 15 Oct, 25 Nov
 2020: 14 Apr

| Fares pp* from | Interior Quad | Oceanview Quad Upgraded to Balcony | Interior Twin | Oceanview Twin Upgraded to Balcony |
|----------------|---------------|---------------------------------------|---------------|---------------------------------------|
| VALUE | \$899 | \$999 | \$1,199 | \$1,499 |
| VALUE PLUS | \$1,219 | \$1,319 | \$1,839 | \$2,139 |

Fares per person based on **bold** departure date on Pacific Explorer. Please request Balcony room at time of booking to receive upgrade. Different fares apply to other departure dates listed.

BOUNTY ADVENTURE 16 NIGHTS

DEPARTING SYDNEY

HIGHLIGHTS: Fiji, New Caledonia and Tonga

2019: 17 Oct

| Fares pp* from | Interior Quad | Oceanview Quad Upgraded to Balcony | Interior Twin | Oceanview Twin Upgraded to Balcony |
|----------------|---------------|---------------------------------------|---------------|---------------------------------------|
| VALUE | \$1,999 | \$2,299 | \$2,499 | \$3,499 |
| VALUE PLUS | \$2,499 | \$2,799 | \$3,489 | \$4,489 |

Fares per person based on **bold** departure date on Pacific Explorer. Please request Balcony room at time of booking to receive upgrade.

P&O SEA AUSTRALIA

SOUTHERN BARRIER REEF DISCOVERY 7 NIGHTS

DEPARTING SYDNEY

HIGHLIGHTS: Mooloolaba and Moreton Island

2019: 8 Jan, 25 Feb, 1 Jun, 1 Aug
 2020: 16 Mar

| Fares pp* from | Interior Quad | Oceanview Quad Upgraded to Balcony | Interior Twin | Oceanview Twin Upgraded to Balcony |
|----------------|---------------|---------------------------------------|---------------|---------------------------------------|
| VALUE | \$649 | \$749 | \$799 | \$1,099 |
| VALUE PLUS | \$879 | \$979 | \$1,259 | \$1,559 |

Fares per person based on **bold** departure dates. Please request Balcony room at time of booking to receive upgrade. For sailings on Pacific Explorer room upgrade applies from Oceanview to Balcony. For sailings on Pacific Eden room upgrade applies from Interior to Oceanview rooms. Different fares apply to other departure dates listed.

P&O MAIN EVENTS

MELBOURNE CUP 6 NIGHTS

DEPARTING SYDNEY

HIGHLIGHTS: Overnight in Melbourne, you'll also enjoy all the excitement of the day at Flemington to watching the race itself.

General Admission to Melbourne Cup
 Return transfers from ship to Flemington on race day

2019: 2 Nov (Pacific Aria), 2 Nov (Pacific Explorer)

| Fares pp* from | Interior Quad | Interior Twin |
|----------------|---------------|---------------|
| VALUE | \$999 | \$1,499 |
| VALUE PLUS | \$1,039 | \$1,579 |

Fares per person based on **bold** departure date on Pacific Aria. Please request Oceanview room at time of booking to receive upgrade. Different fares apply to other departure dates listed.

P&O SEA ASIA

INDONESIAN EXPLORER 14 NIGHTS

DEPARTING SYDNEY TO SINGAPORE

HIGHLIGHTS: Cairns, Bali and Lombok

2020: 28 Jan

| Fares pp* from | Interior Quad | Oceanview Quad Upgraded to Balcony | Interior Twin | Oceanview Twin Upgraded to Balcony |
|----------------|---------------|---------------------------------------|---------------|---------------------------------------|
| VALUE | \$1,099 | \$1,299 | \$1,499 | \$1,899 |
| VALUE PLUS | \$1,539 | \$1,739 | \$2,369 | \$2,769 |

Fares per person based on **bold** departure date on Pacific Explorer. Please request Balcony room at time of booking to receive upgrade.



A TASTE OF TASMANIA 5 NIGHTS

DEPARTING SYDNEY

HIGHLIGHTS: Hobart and Port Arthur

2018: 9 Dec
 2019: 9 Dec

| Fares pp* from | Interior Quad | Interior Twin |
|----------------|---------------|---------------|
| VALUE | \$599 | \$699 |
| VALUE PLUS | \$639 | \$769 |

Fares per person based on **bold** departure date on Pacific Eden. Please request Oceanview room at time of booking to receive upgrade. Different fares apply to other departure dates listed.

AUSTRALIA DAY 3 NIGHTS

DEPARTING SYDNEY

HIGHLIGHTS: Celebrate Australia Day on the iconic Sydney Harbour. You'll be in the prime position to soak up the hustle and bustle of all the celebrations.

2019: 24 Jan

| Fares pp* from | Interior Quad | Interior Twin |
|----------------|---------------|---------------|
| VALUE | \$349 | \$449 |
| VALUE PLUS | \$379 | \$499 |

Fares per person based on **bold** departure date on Pacific Eden. Please request Oceanview room at time of booking to receive upgrade.

CHRISTMAS 10 NIGHTS

DEPARTING SYDNEY

HIGHLIGHTS: Loyalty Islands, New Caledonia and Vanuatu

2018: 17, 18 Dec
 2019: 17, 18 Dec

| Fares pp* from | Interior Quad | Oceanview Quad Upgraded to Balcony | Interior Twin | Oceanview Twin Upgraded to Balcony |
|----------------|---------------|---------------------------------------|---------------|---------------------------------------|
| VALUE | \$1,499 | \$1,849 | \$1,999 | \$2,599 |
| VALUE PLUS | \$1,819 | \$2,169 | \$2,639 | \$3,239 |

Fares per person based on **bold** departure date on Pacific Explorer. Please request Balcony room at time of booking to receive upgrade. Different fares apply to other departure dates listed.

INDONESIAN EXPLORER 14 NIGHTS

DEPARTING SINGAPORE TO SYDNEY

HIGHLIGHTS: Bali, Komodo Island and Airlie Beach

2020: 28 Feb

| Fares pp* from | Interior Quad | Oceanview Quad Upgraded to Balcony | Interior Twin | Oceanview Twin Upgraded to Balcony |
|----------------|---------------|---------------------------------------|---------------|---------------------------------------|
| VALUE | \$1,099 | \$1,299 | \$1,499 | \$1,899 |
| VALUE PLUS | \$1,539 | \$1,739 | \$2,369 | \$2,769 |

Fares per person based on **bold** departure date on Pacific Explorer. Please request Balcony room at time of booking to receive upgrade.